



ANNUAL REPORT 2017-2018

Drake University Head Start



Tel: 515-271-1854

3206 University Ave | Des Moines, IA | 50311

Website: www.drakeheadstart.org

TABLE OF CONTENTS

| | |
|---|----|
| PROGRAM OVERVIEW _____ | 4 |
| Head Start _____ | 4 |
| Early Head Start _____ | 4 |
| Program Goals _____ | 5 |
| FUNDING _____ | 6 |
| COMMUNITY ASSESSMENT _____ | 7 |
| Poverty _____ | 7 |
| Access to Preschool and Child Care Services _____ | 8 |
| Free and Reduced-Price Meals _____ | 8 |
| ENROLLMENT _____ | 9 |
| Funded Enrollment _____ | 9 |
| Head Start Enrollment _____ | 9 |
| Early Head Start Enrollment _____ | 9 |
| Eligibility _____ | 9 |
| HEALTH _____ | 10 |
| Health Education _____ | 10 |
| FAMILY ENGAGEMENT _____ | 11 |
| Parent Education _____ | 11 |
| Parent Leadership _____ | 11 |
| Parent/Child Activities and Events _____ | 12 |
| SCHOOL READINESS _____ | 12 |
| School Readiness Goals _____ | 12 |
| GOLD _____ | 12 |
| Head Start Prepares Children for Kindergarten _____ | 13 |
| FEDERAL MONITORING REVIEW _____ | 14 |
| AUDIT REPORT _____ | 14 |

| | |
|---|----|
| EARLY HEAD START CHILD CARE PARTNERSHIP (EHS-CCP) _____ | 15 |
| Program Overview _____ | 15 |
| EHS-CCP: COMMUNITY ASSESSMENT _____ | 16 |
| EHS-CCP: FUNDING _____ | 17 |
| EHS-CCP: ENROLLMENT _____ | 18 |
| Eligibility _____ | 18 |
| Enrollment _____ | 18 |
| EHS-CCP: HEALTH _____ | 18 |
| EHS-CCP: FAMILY ENGAGEMENT _____ | 19 |
| Family Goals and Parent Education _____ | 19 |
| EHS-CCP: SCHOOL READINESS _____ | 19 |
| EHS-CCP: REVIEW RESULTS _____ | 20 |
| AUDIT REPORT _____ | 20 |

PROGRAM OVERVIEW

During the 2017-2018 program year, Drake University operated two grants: the Head Start/Early Head Start (HS/EHS) grant and the Early Head Start - Child Care Partnership (EHS-CCP) grant. Drake University Head Start has served children and families in the state of Iowa through the HS/EHS grant since 1977. Head Start and Early Head Start promote school readiness for children ages birth to five from low-income, at-risk families by providing families with the education and resources they need in order to advocate for their children as they transition to elementary school and beyond.

The purpose of the EHS-CCP grant is to improve the quality of existing local child care programs and expand access to high-quality care for infants and toddlers. **The Drake University EHS-CCP 2017-2018 Annual Report can be found within this report following the Head Start/Early Head Start section.**

Head Start

Drake University is Grantee for the largest Head Start grant in the state of Iowa. Drake University provides Head Start services to children ages three to five years in six counties: Polk, Boone, Warren, Jasper, Marion, and Story (in Ames only). Drake University Head Start classrooms are located in the following cities:

- Ames
- Ankeny
- Boone
- Des Moines
- Indianola
- Knoxville
- Newton
- Urbandale
- West Des Moines

Families in Polk County have the option for home-based Head Start services as well.

Des Moines Public Schools (DMPS), the largest school district in the state, provides Head Start services in the DMPS enrollment area as a Delegate of Drake University Head Start.

Early Head Start

Early Head Start programming is available to children from birth to three years of age who reside in Polk County. The Early Head Start home visiting program is available to children

ages birth to three. Children between the ages of two and three have the option for a center-based program designed to suit the specific needs of toddlers.

Program Goals

During the 2017-2018 program year, Drake University Head Start was in the third year of a five-year project. The goals for this project are:

Goal #1: *Children will be better prepared for school success.*

Goal #2: *Enhance the monitoring system to fully utilize data to make informed program decisions.*

Goal #3: *Foster a positive culture and climate built upon collaboration and strengths.*

Goal #4: *Empower families to be their child's first, most important, and forever teacher.*

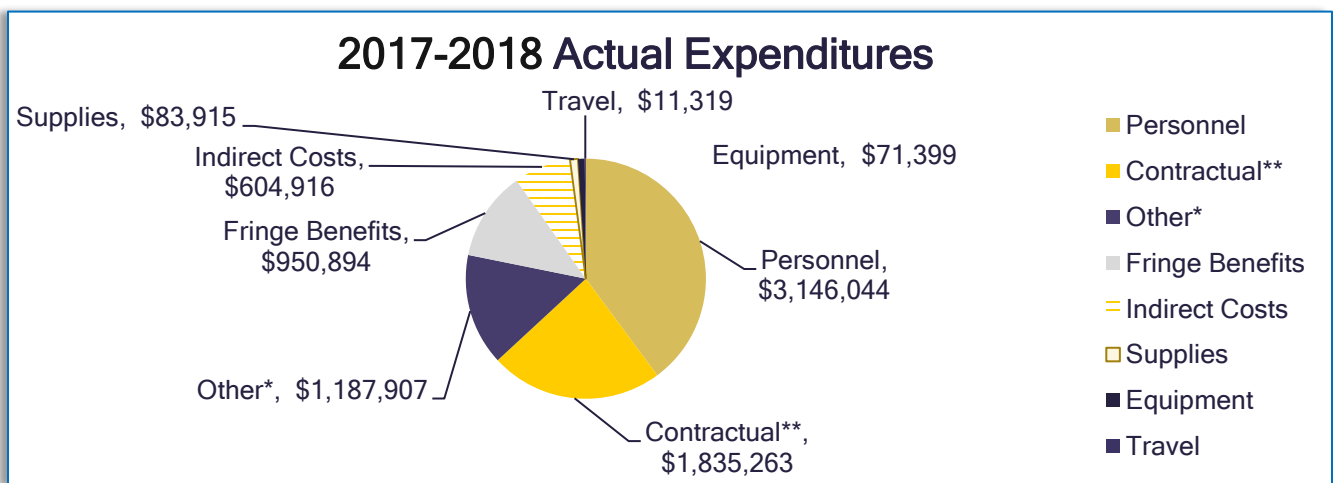
FUNDING

Drake University Head Start receives federal funding from the U.S. Department of Health and Human Services through the Administration for Children and Families - Office of Head Start. The agency was awarded \$7,891,657 for the 2017-2018 program year. This figure includes \$952,815 in ongoing duration funding that the agency was awarded during the 2016-2017 program year and an additional cost of living adjustment (\$56,474 for HS; \$11,241 for EHS) awarded to all Head Start grantees in the 2017-2018 program year.

The tables and charts below detail the funding allocation, proposed budget, and actual expenditures for the Drake University HS/EHS grant for the 2017-2018 program year.

| 2017-2018 Drake University Head Start Funding Allocation | |
|--|---------------|
| Head Start Programming | \$ 6,301,356* |
| Head Start Training | \$ 72,415 |
| Early Head Start Programming | \$ 1,490,635 |
| Early Head Start Training | \$ 27,251 |
| <i>*Includes \$1,791,062 in Head Start funds for contractual Delegate programming.</i> | |

| 2017-2018 Proposed Budget | |
|-----------------------------|-------------|
| Personnel | \$3,239,412 |
| Contractual (DMPS Delegate) | \$1,791,062 |
| Fringe Benefits | \$ 957,572 |
| Indirect Costs | \$ 628,007 |
| Supplies | \$ 105,029 |
| Equipment | \$ 47,200 |
| Travel | \$ 12,409 |
| Other* | \$1,110,966 |



** *Contractual* refers to Drake University Head Start's contract with DMPS (Delegate agency).

COMMUNITY ASSESSMENT

Poverty

Data from the United States Census Bureau's American Community Survey (2012-2016 Five-Year Estimates) provides a snapshot of the need that exists within the Drake University Head Start service area.

The term "poverty," as it is used here, refers to families who fall below the Federal Poverty Level (FPL) established by the US government.

2017 FEDERAL POVERTY GUIDELINES

| FAMILY SIZE | ANNUAL INCOME |
|-------------|---------------|
| 2 | \$16,040 |
| 3 | \$20,420 |
| 4 | \$24,600 |



THERE ARE MORE THAN 6,950 FAMILIES WITHIN EACH COUNTY OF THE DRAKE UNIVERSITY HEAD START SERVICE AREA LIVING BELOW THE FEDERAL POVERTY LEVEL

In the Drake University HS/EHS service area, 5% to 9% of families live below the FPL. These low percentages can create the illusion that the number of families struggling with abject poverty is relatively low. In reality, more than 6,950 families in each county within Drake University Head Start's service area live below the FPL. Of those families, up to 25% are families with children under five.

| County | Families With Children Younger Than 5 Years Living Below Federal Poverty Level |
|--------|--|
| Boone | 483 |
| Jasper | 930 |
| Marion | 588 |
| Polk | 12,626 |
| Story | 2,064 |
| Warren | 1,030 |

Access to Preschool and Child Care Services

School districts in Iowa receive funds through the Statewide Voluntary Preschool Program (SWVPP) to provide preschool services to four-year-olds who will be entering kindergarten the following year. Cohort data (preschool to kindergarten) from the most recent Community Assessment indicates that there are four-year-old children in the majority of school districts in Drake University Head Start's service area who are not receiving preschool services through the district.

Only four-year-old children are funded through the SWVPP. There are limited preschool options for three-year-old children within the service area. Most are not free, and more providers are refusing to accept child care assistance as a form of payment. Between 21-35% of the child care programs throughout the service area refuse to accept child care assistance.

Free and Reduced-Price Meals

The school districts Drake University Head Start serves are generally those with a high percentage of families receiving free and reduced price meals. Most of the districts in the Drake University Head Start service area had a free and reduced lunch rate of around 30%. Des Moines Public Schools, the district that operates the agency's delegate program, had a free and reduced lunch rate of 74%.

ENROLLMENT

Funded Enrollment

Drake University Head Start receives funding to serve 926 HS/EHS children ages birth to five across a six-county service area. Of the 926 children Drake University Head Start is funded to serve, DMPS serves 454 Head Start children in the district attendance area. Drake University provides Head Start services for 384 children and for 88 Early Head Start children.

Head Start Enrollment

Head Start Funded Enrollment: 838

Average Head Start Enrollment: 99.5%

Early Head Start Enrollment

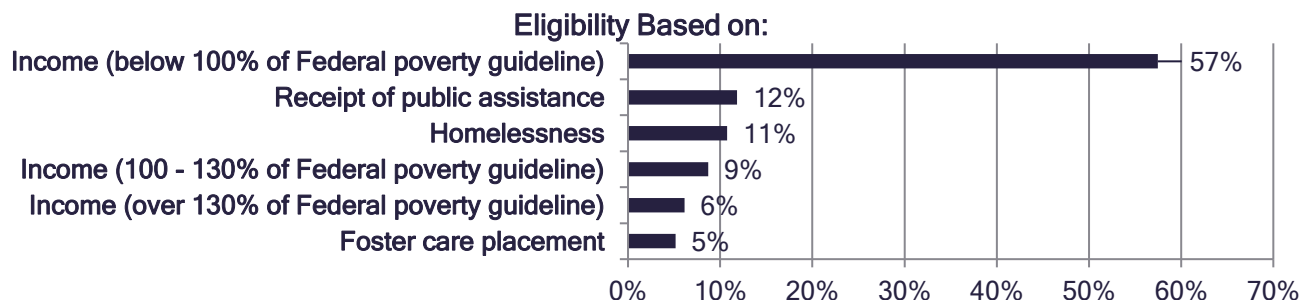
Early Head Start Funded Enrollment: 88

Average Early Head Start Enrollment : 99.2%

*Drake University Head Start served
1,120 CHILDREN AND FAMILIES during the 2017-
2018 program year*

Eligibility

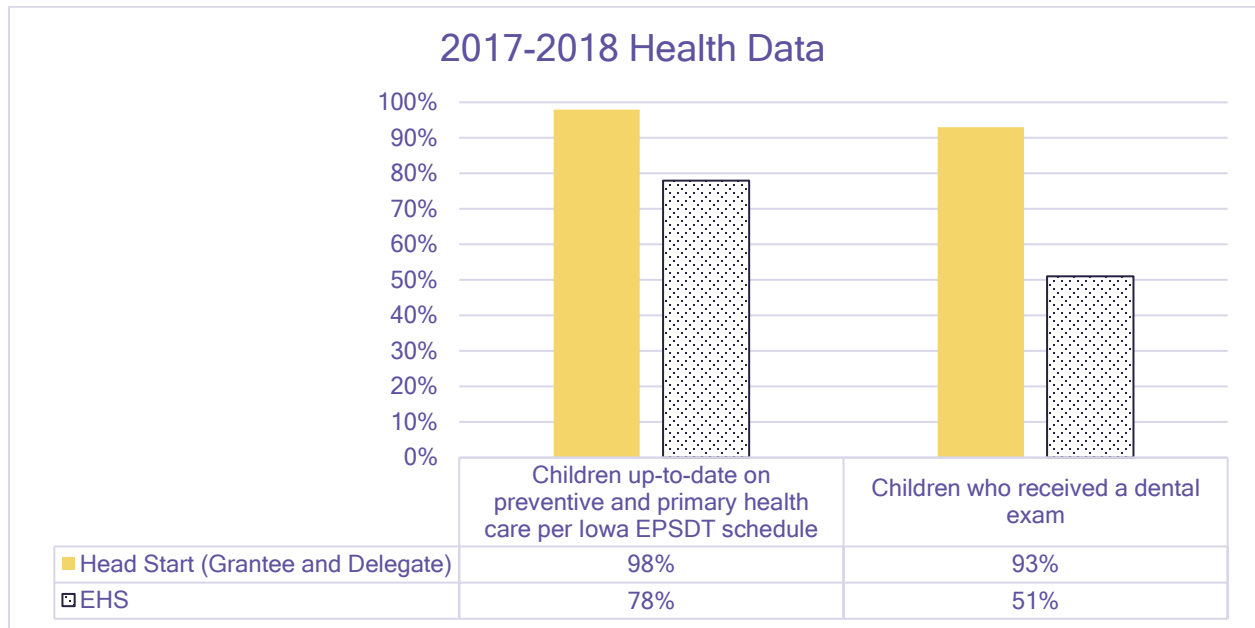
Many families served by the program are eligible in multiple categories; only one eligibility category is reported to the United States Department of Health and Human Services through the Administration for Children and Families - Office of Head Start. The percentage of children in each category is reported below.



HEALTH

Along with conducting hearing, vision, and developmental screenings for enrolled children, Head Start provides families with education and resources on health-related topics.

The chart below reflects the percentage of children who were up-to-date on their preventive and primary health care and those who received a dental exam by the end of the program year.



Health Education

Health education events provide Grantee and Delegate families with resources and tools to meet their health goals. The *Health Care Institute*, conducted twice per year, focuses on what families should do when faced with illness or dental emergencies. *CPR and First Aid for Friends and Family* is offered in service areas where the Parent Needs and Interests Survey indicates high parent interest. Health events are well-attended with a favorable response from parents.

FAMILY ENGAGEMENT

Drake University Head Start engages families in their child's education through parent/child activities and events, leadership opportunities in program governance, and parent education.

Parent Education

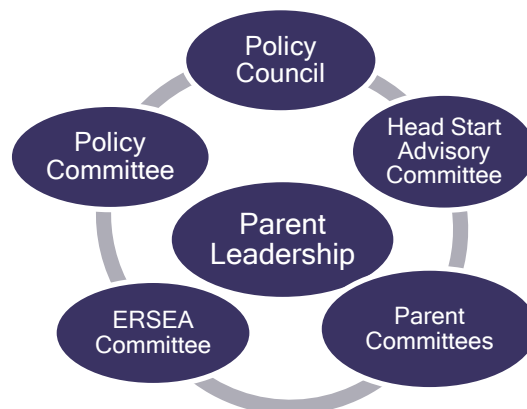
Drake University Head Start staff work one-on-one with parents to learn more about their family's needs and provide parents with appropriate resources to help them meet their needs. In addition to individualized resources, families receive:

- MONTHLY NEWSLETTERS
- MONTHLY *KID FOOD* AND *SMART FOOD* BULLETINS
- ONGOING PARENT EDUCATION CLASSES SPECIFIC TO THE CENTERS' EXPRESSED NEEDS
- MATERIALS FOR FAMILIES IN CENTER LENDING LIBRARIES
- PARENT AND CHILD TOGETHER (PACT) TIME TO PROMOTE PARENT/CHILD ENGAGEMENT AT SCHOOL IN THE CLASSROOM (WEEKLY FOR DMPS, MONTHLY FOR DRAKE UNIVERSITY HEAD START)

Des Moines Public Schools also offers monthly parent education opportunities through "Coffee and Connections." At Coffee and Connections, Family Engagement Facilitators, nurses, social workers, case managers, and interpreters help parents connect with their child's school, network with other parents, and connect parents with the community. Parent education topics offered are in direct response to needs identified by parents on the fall Parent Survey and the Family Strengths Survey.

Parent Leadership

Parents have the opportunity to develop their leadership skills by participating in a variety of committees and sub-committees within the agency's governance structure.



Parent/Child Activities and Events

In addition to Family Nights and PACT times, Drake University Head Start offers three agency-wide parent/child events each year for all enrolled children and their families:

- A Day at Living History Farms
- An Evening at the Science Center of Iowa
- Head Start Day at the Blank Park Zoo

SCHOOL READINESS

School Readiness Goals

Drake University Head Start's foremost goal is that "Children will be better prepared for school success." Agency objectives to assess progress toward this goal address overall school performance with a focus on social-emotional development and literacy skills.

GOLD

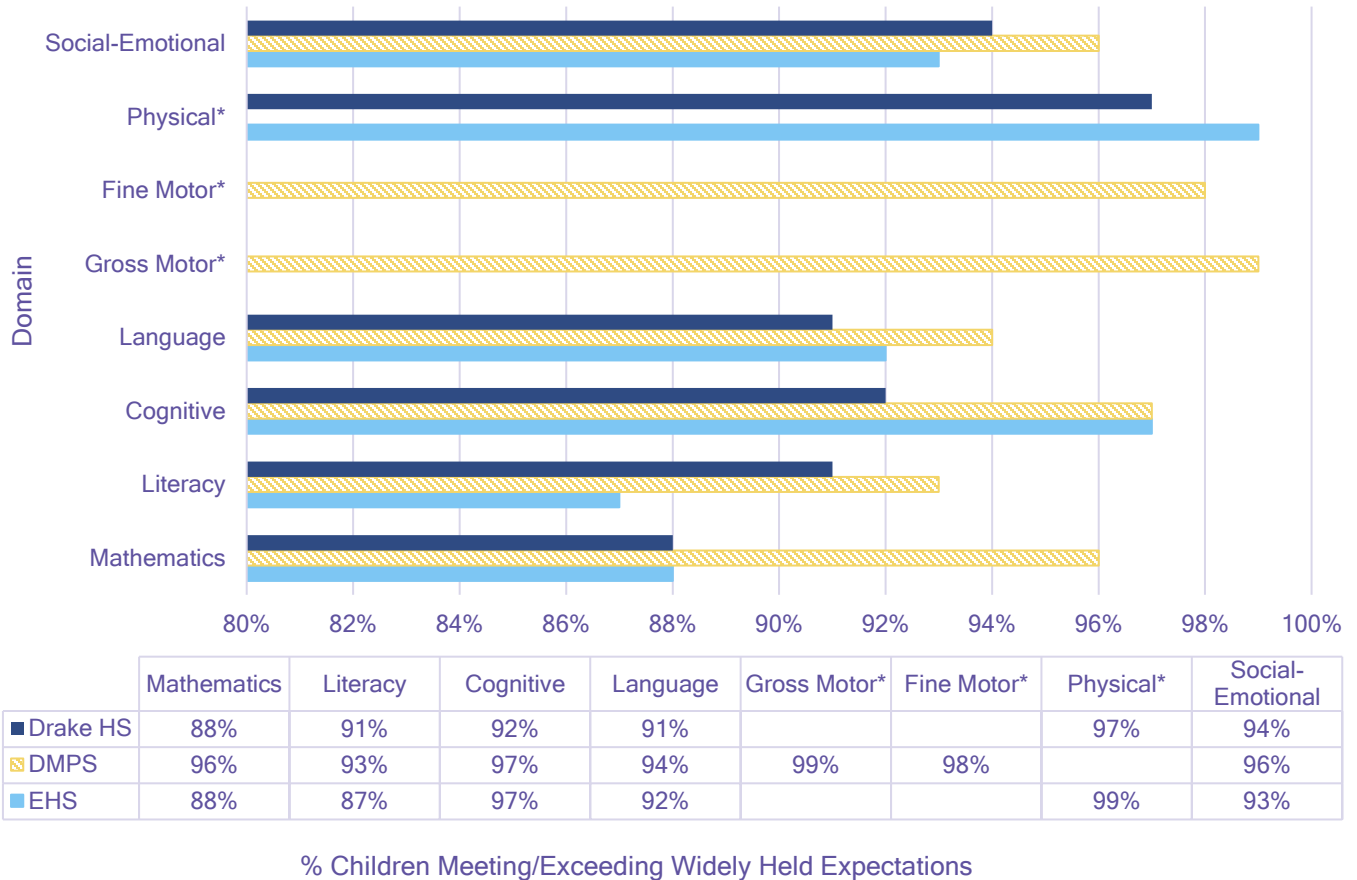
Drake University Head Start and Early Head Start programs conduct ongoing child assessment and data collection using the Teaching Strategies GOLD Online Assessment System. Teachers and Infant/Toddler Specialists enter anecdotal and media evidence into the GOLD system, assessing child progress at common checkpoints during the year.

The GOLD Online Assessment System measures child progress toward age-appropriate Widely Held Expectations in the following domain areas:

- Social Emotional development
- Physical development
- Cognitive development
- Language skills
- Literacy
- Mathematic skills

The following chart represents the percentage of children meeting or exceeding GOLD Widely Held Expectations at the end of the 2017-2018 program year. These numbers represent all children enrolled in the Grantee and Delegate Head Start and Early Head Start programs, including children receiving early childhood special education services. EHS-CCP is not included in these numbers.

2017-2018 GOLD Child Assessment Scores



**Teaching Strategies GOLD, the tool Drake University Head Start uses for child assessment, performed a wide-scale update to their software effective August 1, 2017. This update combined the gross motor and fine motor data subsets within the Physical domain to provide one aggregate score for the Physical domain. DMPS calculates data in-house, disaggregating the objectives into two separate domains.*

Head Start Prepares Children for Kindergarten

Drake University Head Start and Des Moines Public Schools partner with families to facilitate a successful transition to kindergarten. Head Start works closely with families, helping them plan for this change through:

- ✍ Discussions about transition during winter and spring parent-teacher conferences;
- ✍ Information to parents about their child's neighborhood school, including information on registration/enrollment processes for kindergarten such as Kindergarten Round Up;
- ✍ Information to parents about summer learning opportunities; and
- ✍ Exchange of pertinent information and student records with parents and between programs as appropriate.

FEDERAL MONITORING REVIEW

In April 2018, a Federal Monitoring Review Team conducted a Focus Area Two monitoring review with Drake University Head Start. Team members visited Grantee and Delegate classrooms, observing daily operations for compliance with the Head Start Act of 2007 and Head Start Program Performance Standards.

Overview of Findings

The Overview of Findings is explicitly aligned with sections of the Head Start Program Performance Standards and Head Start Act of 2007. The Overview of Findings identifies areas of compliance, non-compliance, or concern for each section from the Head Start Monitoring Protocol. The agency was determined to be compliant in all areas. CLASS scores for classrooms observed during the April, 2018 monitoring visit are in compliance with OHS standards and the Head Start Act of 2007 641A(c)(2)(F).

AUDIT REPORT

An independent audit for Drake University, which included both grants, was conducted by Deloitte & Touche, LLP. No concerns were noted in the Independent Auditor's Report dated October 23, 2018.

EARLY HEAD START CHILD CARE PARTNERSHIP (EHS-CCP)

Program Overview

On December 10, 2014, President Barack Obama announced that Drake University was one of 234 agencies nationwide to be awarded a new grant from the U.S. Health and Human Services' Administration for Children and Families: the Early Head Start Child Care Partnership (EHS-CCP) grant. The grant is a partnership between the Office of Head Start and the Office of Child Care. Through this grant, Drake University partners with eight local child care centers to serve 90 infants and toddlers in the Des Moines Urban Core. The Urban Core of Des Moines is home to the most at-risk youth and families in the community.

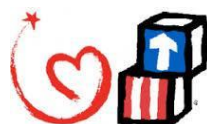
Goal #1: *Improve outcomes for children by providing comprehensive, full-day, full-year experiences in a quality learning environment facilitated by highly qualified staff.*

Goal #2: *Provide support and education to parents to improve self-sufficiency and competency in their roles as parents.*

Goal #3: *Increase staff qualifications and skills through instructional coaching and quality, comprehensive professional development.*

It is through the EHS-CCP grant that the models for child care and Early Head Start intersect. Over the course of this project period, Drake University Head Start has worked with partner sites to build and open classrooms, recruit families, provide professional development and instructional coaching to staff, and provide family services to enrolled children. The following child care centers are Drake University's EHS-CCP partners:

- Capitol Park Early Learning Center
- Children & Families of Iowa - Child Development Center
- Children & Families of Iowa - Teddy Bear Town
- Conmigo Early Education Center
- House of Mercy Child Development Center
- Little Sprouts Children's Center
- Oak Academy
- Wonder Years Academy



EHS-CCP: COMMUNITY ASSESSMENT

EHS-CCP services are centered in the inner city of Des Moines (also known as the “Urban Core”), the area of the city where the greatest concentration of at-risk families reside.

Demographic data for the Urban Core shows a low-income population where more residents rent than own and many do not pursue higher education.

In the 2012-2016 American Community Survey, the US Census Bureau reported that 13.5% of families with children under the age of five in Polk County were living below the federal poverty level. This figure doubles in the Urban Core. Census data shows that 26.5% of families with a child under the age of five in the Urban Core are living below the federal poverty level.

Census data over the course of this project period shows steady growth of Des Moines’ population by about 1% annually. The percentage of families eligible for free and reduced-

2017 FEDERAL POVERTY GUIDELINES

| FAMILY SIZE | ANNUAL INCOME |
|-------------|---------------|
| 2 | \$16,040 |
| 3 | \$20,420 |
| 4 | \$24,600 |



OVER 26% OF THE FAMILIES WITH CHILDREN UNDER AGE 5 IN DES MOINES’ URBAN CORE ARE LIVING BELOW THE FEDERAL POVERTY LEVEL

price meal families within the Des Moines Public School (DMPS) district has increased as well. At the inception of this grant, the percentage of DMPS families eligible for free and reduced-price meals was 70.2%. By the start of the 2017-2018 school year, this figure had risen to 75.7%.

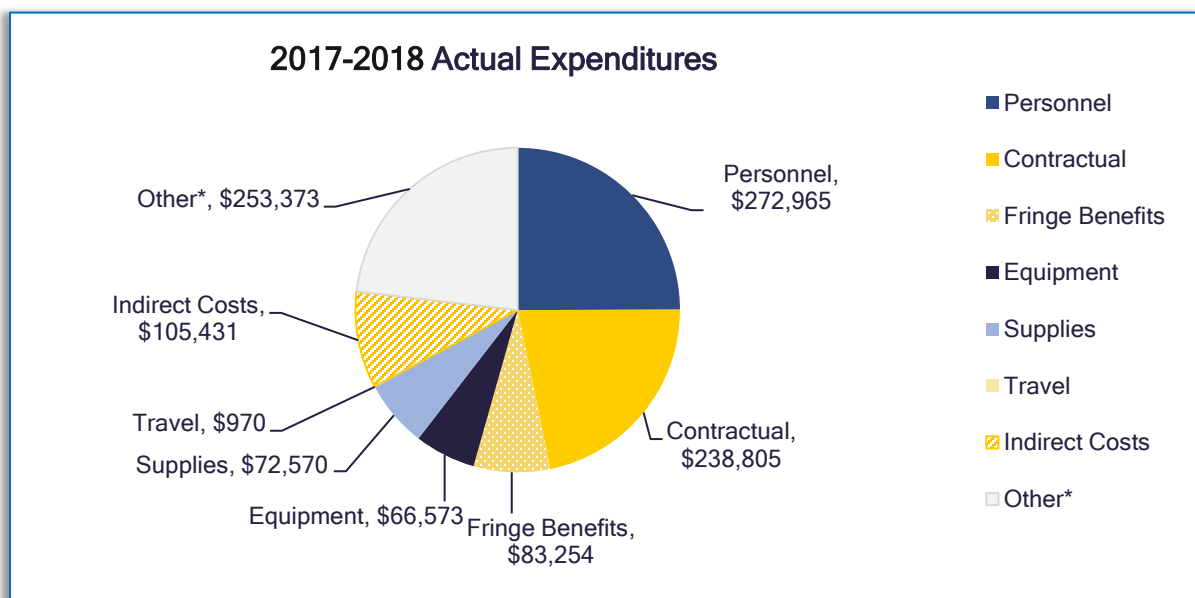
EHS-CCP: FUNDING

EHS-CCP funding comes from the same source as Head Start and Early Head Start funding: the United States Department of Health and Human Services' Administration of Children and Families' Office of Head Start.

The tables and charts below detail the funding allocation, proposed budget, and actual expenditures for the Drake University Head Start EHS-CCP grant for the 2017-2018 program year.

| 2017-2018 Drake University EHS-CCP Funding Allocation | |
|--|---------------------|
| Early Head Start Programming | \$ 1,024,325 |
| Early Head Start Training | \$ 24,906 |
| One-time expenditure for minor renovation of new child care partner site | \$ 44,710 |
| Total | \$ 1,093,941 |

| 2017-2018 Proposed Budget | |
|---------------------------|------------|
| Personnel | \$ 280,573 |
| Contractual | \$ 410,037 |
| Fringe Benefits | \$ 84,480 |
| Indirect Costs | \$ 88,262 |
| Supplies | \$ 59,680 |
| Equipment | \$ 5,000 |
| Travel | \$ 2,036 |
| Other* | \$ 163,873 |

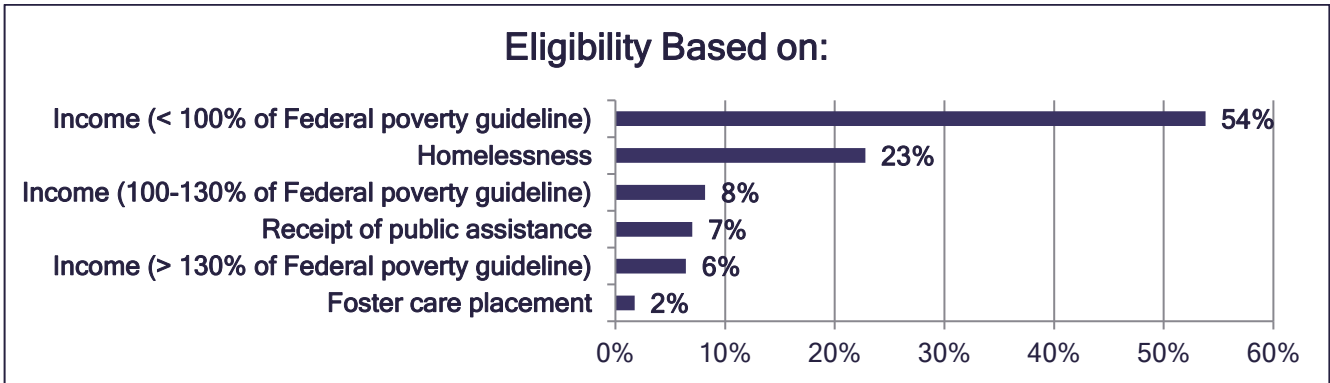


*Other includes expenditures such as repair/maintenance, space and construction costs, interpretation/translation services, software, etc.

EHS-CCP: ENROLLMENT

Eligibility

During the 2017-2018 program year, cumulative enrollment for Drake University’s EHS-CCP program was 171 children. Many families served by the program are eligible in multiple categories; only one eligibility category is reported to the U.S. Department of Health and Human Services through the Administration for Children and Families - Office of Head Start. The percentage of children in each category is reported below.



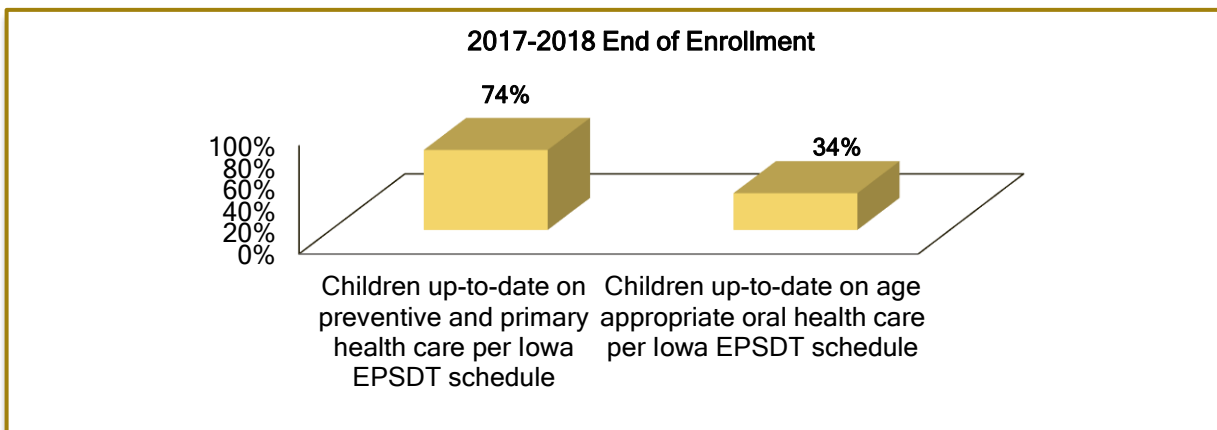
Enrollment

Enrollment numbers reflect the average enrollment throughout the 2017-2018 program year.

Monthly Funded Enrollment: 90
 Average Monthly Enrollment: 98.6%

EHS-CCP: HEALTH

Drake University EHS-CCP staff provide resources and education, then follow up with families on referrals to appropriate providers. Drake University EHS-CCP focuses on improving the overall health of families by improving their health habits.



EHS-CCP: FAMILY ENGAGEMENT

Family Goals and Parent Education

EHS-CCP family engagement activities include parent education, parent leadership opportunities, and home visits. During the enrollment process, Family Engagement Specialists work with families to develop individualized goals based on the families' needs and interests. Family Engagement Specialists have routine contact with families to help them move toward goal achievement.

Because EHS-CCP families do not always drop off and pick up at the same time, parent education group sessions are rare. EHS-CCP families are invited to the agency's *Health Care Institute* to learn more about how to handle various childhood illnesses and when it is imperative for children to see a doctor.

EHS-CCP families are invited to participate in three agency-wide parent/child events each year for all enrolled children and their families:

- A Day at Living History Farms
- An Evening at the Science Center of Iowa
- Head Start Day at the Blank Park Zoo

EHS-CCP: SCHOOL READINESS

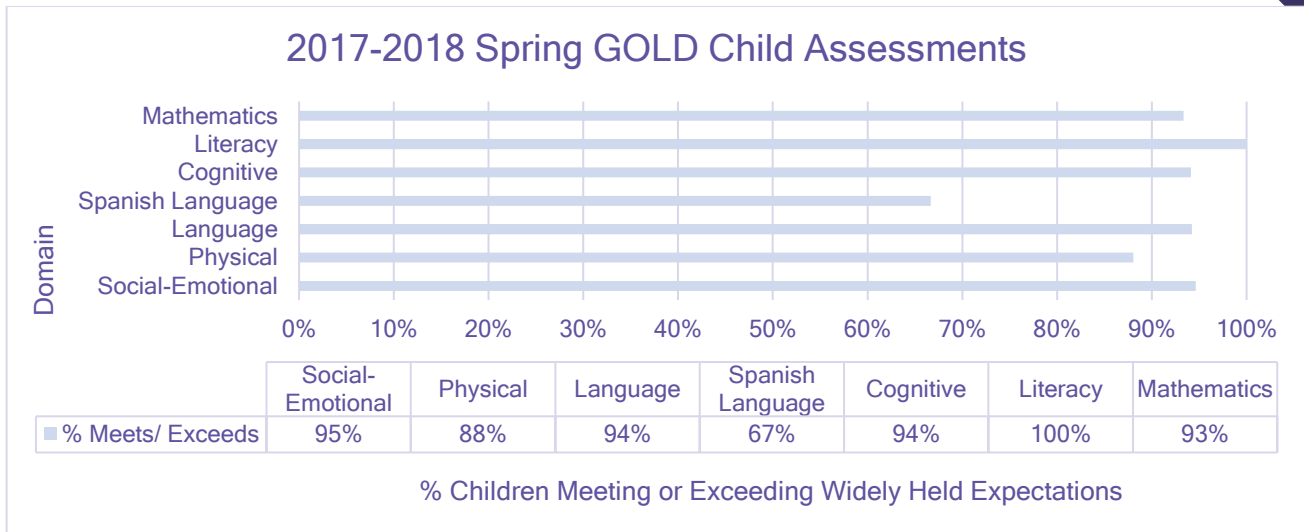
In the infant and toddler classrooms, school readiness can be seen in the child/caregiver relationships rather than the writing and drawing samples in the preschool classrooms. The EHS-CCP programming focuses on creating a secure base for the children and forming relationships.



communityplaythings.com

EHS-CCP classrooms use either Teaching Strategies GOLD or the Early Learning Accomplishment Profile (E-LAP) to assess child progress toward widely held expectations in each domain.

Aggregated spring 2018 assessment data for Child Development Center, Conmigo, House of Mercy, Oak Academy, and Wonder Years is depicted on the next page. Capitol Park, Little Sprouts and Teddy Bear Town piloted the E-LAP tool in spring 2018. As a result of the intense learning progression for teaching staff, finalized data is not available.



EHS-CCP: REVIEW RESULTS

In April 2018, a Federal Monitoring Review Team conducted a Focus Area Two monitoring review with Drake University Head Start. Team members visited Grantee, Delegate, and EHS-CCP classrooms, observing daily operations for compliance with the Head Start Act of 2007 and Head Start Program Performance Standards.

Overview of Findings

The Overview of Findings is explicitly aligned with sections of the Head Start Program Performance Standards and Head Start Act of 2007. The Overview of Findings identifies areas of compliance, non-compliance, or concern for each section from the Head Start Monitoring Protocol. The agency was determined to be compliant in all areas.

AUDIT REPORT

An independent audit for Drake University, which included both grants, was conducted by Deloitte & Touche, LLP. No concerns were noted in the Independent Auditor's Report dated October 23, 2018.